



PARKS AND RECREATION ONTARIO

MEDIA KIT

YOUR CONNECTION TO ONTARIO'S
PARKS AND RECREATION SECTOR

About us

Parks and Recreation Ontario is a non-profit association that advances the health, social and environmental benefits of quality recreation and parks through advocacy, education and quality standards.

PRO has over 6,000 members in municipalities, private and non-profit recreation and parks, health, sport, education, fitness and related sectors. PRO's members provide recreation and parks programs and facilities to more than 85% of Ontarians.

PRO's industry-leading NewsBrief is your opportunity to reach our membership with a choice of options to meet your marketing needs.

OUR VISION

Healthy People
Vibrant Communities
Sustainable Environments

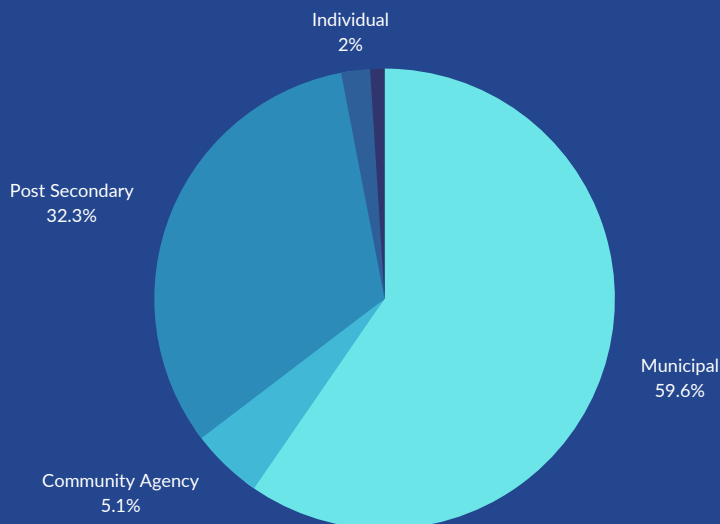
OUR MISSION

Advance quality recreation and parks through advocacy, standards, tools and training



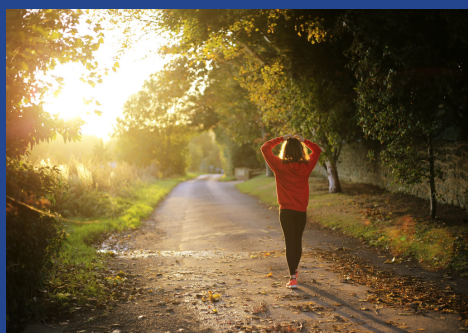
Why advertise with us?

PRO is the leading voice for the parks and recreation sector in Ontario. With 6,000 members on our mailing list, we serve as the conduit of trends and change across the sector.



Membership Breakdown

3,673	295	36	2,015
MUNICIPAL	COMMUNITY AGENCY	CORPORATE	POST SECONDARY



Pricing

We have two ad types that can be purchased for NewsBrief- a **banner ad** and a **box ad**. Both package prices below include **one advertisement** that will run for **three months!**

Ad Type	Dimensions	3 Month Package Price- Member	3 Month Package Price- Non-Member
Banner Ad	468 x 60px	\$1000.00	\$1280.00
Box	300 x 250px	\$940.00	\$1200.00



SAVE
22%
with a PRO
membership

JOIN TODAY

to receive the full benefits of a PRO membership, and help create a strong, healthy future for parks and recreation in Ontario.

For more information about membership, [head to our website.](#)

Contact Info

Sarah Ane

sane@prontario.org
289-241-4325

**Parks and Recreation
Ontario**
1 Concorde Gate
Toronto, ON
M3C3N6

www.prontario.org



@prontario



@Parks and Recreation
Ontario



@Parks and Recreation
Ontario



@PROntario

